



ROHS-Compliant Product

VCXO-S622-LF



1. Specification

Nominal Frequency @ $V_c = 1.65 \text{ V}$, $T = 25^\circ \text{C}$:	125 MHz
Frequency stability : <ul style="list-style-type: none">- v.s. temperature range -40°C to $+85^\circ \text{C}$:- nominal frequency tolerance ($V_c=1.65 \text{ V}$, $T=25^\circ \text{C}$):- vs. supply voltage changes $V_s \pm 5\%$:- vs. load changes $\pm 10\%$:	$\leq \pm 20 \text{ ppm}$ $\leq \pm 10 \text{ ppm}$ $\leq \pm 3 \text{ ppm}$ $\leq \pm 2 \text{ ppm}$
Aging at 25°C :	$\leq \pm 3 \text{ ppm} / 1^{\text{st}} \text{ year}$ $\leq \pm 10 \text{ ppm over 15 years}$
Frequency control range:	$\geq \pm 60 \text{ ppm}$, $\leq \pm 120 \text{ ppm}$
Control voltage V_C :	0.3 V to 3.0 V
Transfer function / Linearity:	positive / 10 %
Control voltage input impedance:	$\geq 50 \text{ k}\Omega$
Modulation Bandwidth (-3 dB cut-off frequency):	$\geq 10 \text{ kHz}$
Supply voltage V_S :	$3.3 \text{ V} \pm 5\%$
Current consumption:	$\leq 85 \text{ mA}$
Output voltage : load: duty cycle:	LVPECL 50 Ohm 40 % / 60 %
Output E/D function Control input (pin 2) HIGH: Control input (pin 2) LOW or not connected:	Outputs Disabled Outputs Enabled
Phase noise: 10 Hz: 100 Hz: 1 kHz: 10 kHz: 100 kHz:	$\leq -55 \text{ dBc} / \text{Hz}$ $\leq -80 \text{ dBc} / \text{Hz}$ $\leq -110 \text{ dBc} / \text{Hz}$ $\leq -120 \text{ dBc} / \text{Hz}$ $\leq -130 \text{ dBc} / \text{Hz}$
Temperature ranges Operating: Storage:	$-40^\circ \text{C} \dots +85^\circ \text{C}$ $-45^\circ \text{C} \dots +95^\circ \text{C}$

4				KVG Quartz Crystal Technology GmbH P.O. Box 61 D-74924 Neckarbischofsheim Tel. +49 (0) 7263 / 648-0 Fax. +49 (0) 7263 / 6196
3				
2				
1		20,08,10	M. Zupan	
ED	Description	Date	Name	



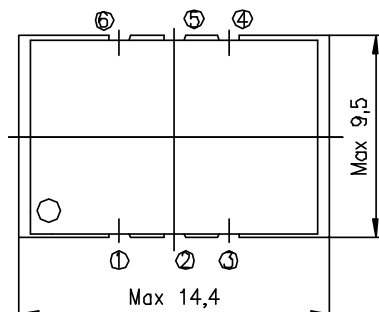
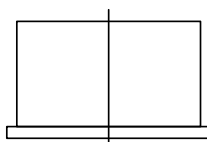
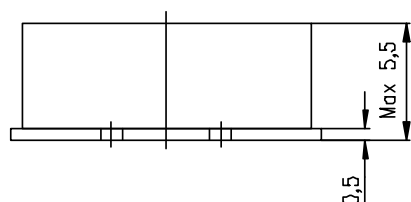
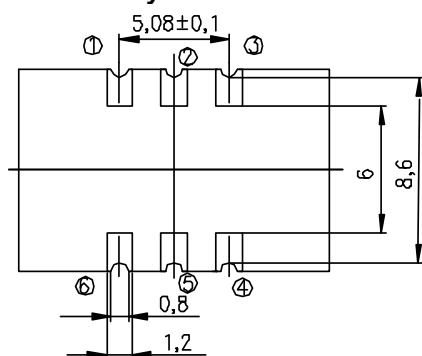
ROHS-Compliant Product

VCXO-S622-LF**2. Environmental conditions**

According to KVG Product Qualification Procedure AA-QM-200

3. Marking

1. ww KVG yy
2. VCXO-S622-LF
3. 125.0MHz

4. Case**Case style: BF-188-5.5A****1.Pin configuration**

1. Control voltage V_C
2. Output Enable/Disable
3. Ground case
4. RF Output
5. Complementary RF Output
6. Supply voltage V_S

4				KVG Quartz Crystal Technology GmbH P.O. Box 61 D-74924 Neckarbischofsheim Tel. +49 (0) 7263 / 648-0 Fax. +49 (0) 7263 / 6196
3				
2				
1		20,08,10	M. Zupan	
ED	Description	Date	Name	



ROHS-Compliant Product

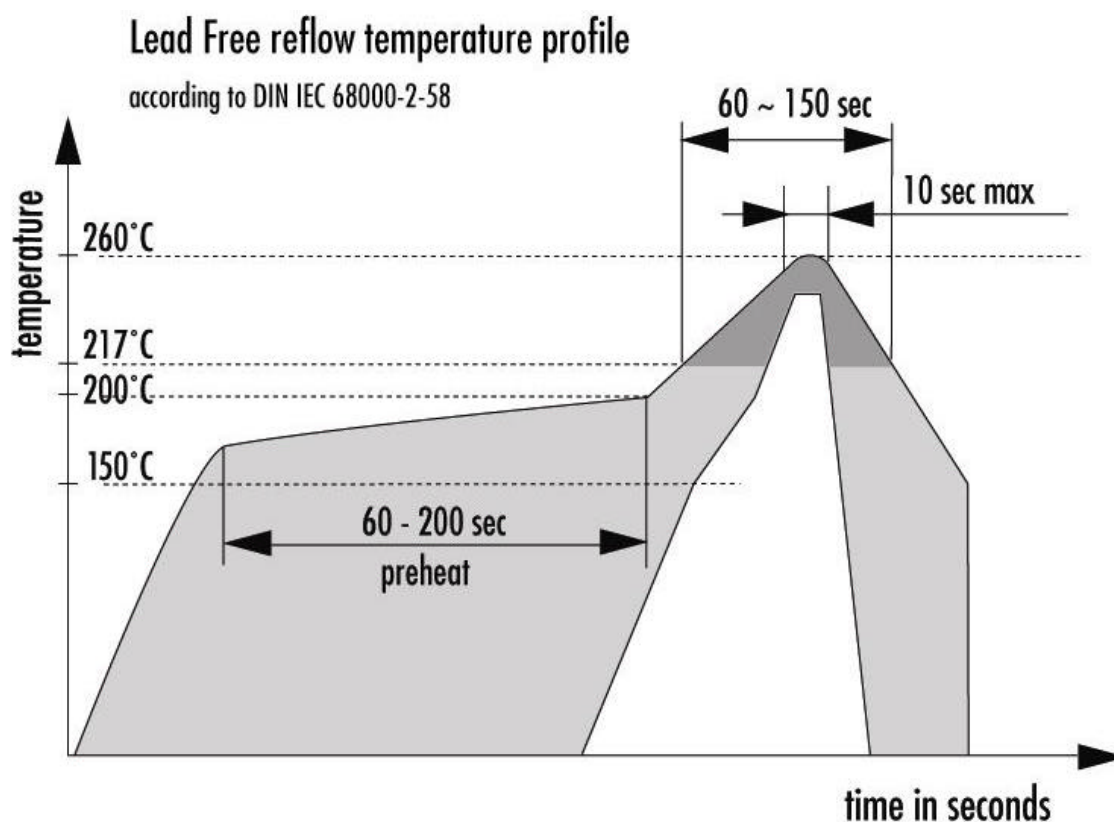
VCXO-S622-LF



5. ROHS Info

Moisture Sensitivity Level: 2
Termination finish: AuNi
Max. reflow temperature: 260°C

6. Soldering profile



4				KVG Quartz Crystal Technology GmbH
3				P.O. Box 61
2				D-74924 Neckarbischofsheim
1		20,08,10	M. Zupan	Tel. +49 (0) 7263 / 648-0
ED	Description	Date	Name	Fax. +49 (0) 7263 / 6196